

XGS58E

Telescopic boom lift

FEATURES

MEASUREMENTS

58.6m working height
Up to 230/450kg lift capacity

PRODUCTIVITY

2.4m × 0.9m steel platform
4 driving wheels
4 steering wheels
45% theoretical gradeability
Solid rubber tires
Platform automatic leveling system
160° platform rotation
Fully proportional multi-function controls
Hydraulic oil cooler
Drive enable
Hourmeter record
Tilt alarm
Lift and lower alarm
Drive alarm
360° continuous turntable rotation
Lockable turntable cover
High/Slow speed mode
Turntable control box
Engine status display
Steering lever control
Flashing beacon
Emergency power unit
12V DC emergency power

POWER

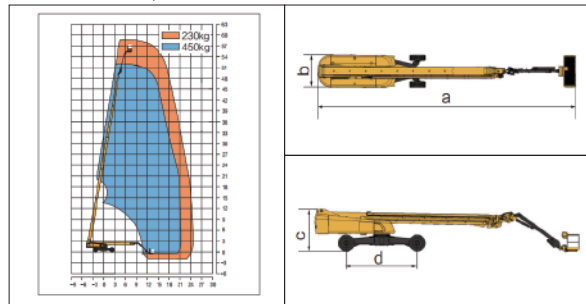
Engine protection devices
Cummins Euro stage V emission

OPTIONS

Foam-filled rough terrain tires
Tool tray
Platform working light
AC power to the platform
Platform anti-collision device



Work Curve Graph



Item	Unit	XGS58E
Working Height	m	58.6
Platform Height	m	56.6
Working radius	m	24.8
Lift capacity	kg	230/450
Boom luffing range	°	-1~+80
Fly jib luffing range	°	-45~+75
Turntable rotation	°	360
Platform rotation	°	160
Tailswing	mm	2320
Drive Speed	km/h	4.5
Turning Radius axle retracted	(inside) m	7.6
	(outside) m	9.5
Turning Radius axle extended	(inside) m	2.8
	(outside) m	6.6
Ground clearance	mm	250
Gradeability	%	45
Tires	-	455/55-25 R28
Power source	-	Cummins F3.8
Rated power	kW(r/min)	75/2200
Fuel tank	L	200
Hydraulic tank	L	250
Weight	kg	27900
Platform size	mm	2400x900
a Length	mm	19450
b Width (axle retracted/axle extended)	mm	2490/5030
c Height	mm	3070
d Wheelbase (axle retracted/axle extended)	mm	5220/4590